

VARI-FLEX® WITH EVO™



The Vari-Flex with EVO provides an exclusive combination of comfort and dynamics.

The Vari-Flex with EVO is light-weight, easy to assemble and has a slender profile which makes it easy to cosmetically cover.

For users it ensures the highest levels of confidence and security. Offering natural gait with less fatigue and ultimately less strain on the lower back and sound side, it is the ideal foot for any activity.

The EVO feature enables users to experience natural gait progression by utilizing the foot plate to its fullest potential. A more natural gait reduces fatigue and puts less strain on the lower back and sound side.



FLEX-FOOT®
Classic Flex-Foot

USER INFORMATION		FOOT INFORMATION	
Amputation Level:	Transfemoral and Transtibial	Categories:	1-9
Impact Level:	Low to High	Sizes:	22-30
Maximum Patient Weight:	166kg (365lbs)	Weight of Foot: (Size 27)	700g (24.7oz) w/ Pyramid and Foot Cover
		Build Height: (Size 27)	170mm (6 11/16") w/ Pyramid and Foot Cover
		Heel Height:	10mm and 19mm (3/8" and 3/4")
		Adapter Options:	Male Pyramid or Carbon Tube

FULL LENGTH TOE LEVER	PROPORTIONAL RESPONSE	ACTIVE TIBIAL PROGRESSION	CARBON-X® ACTIVE HEEL

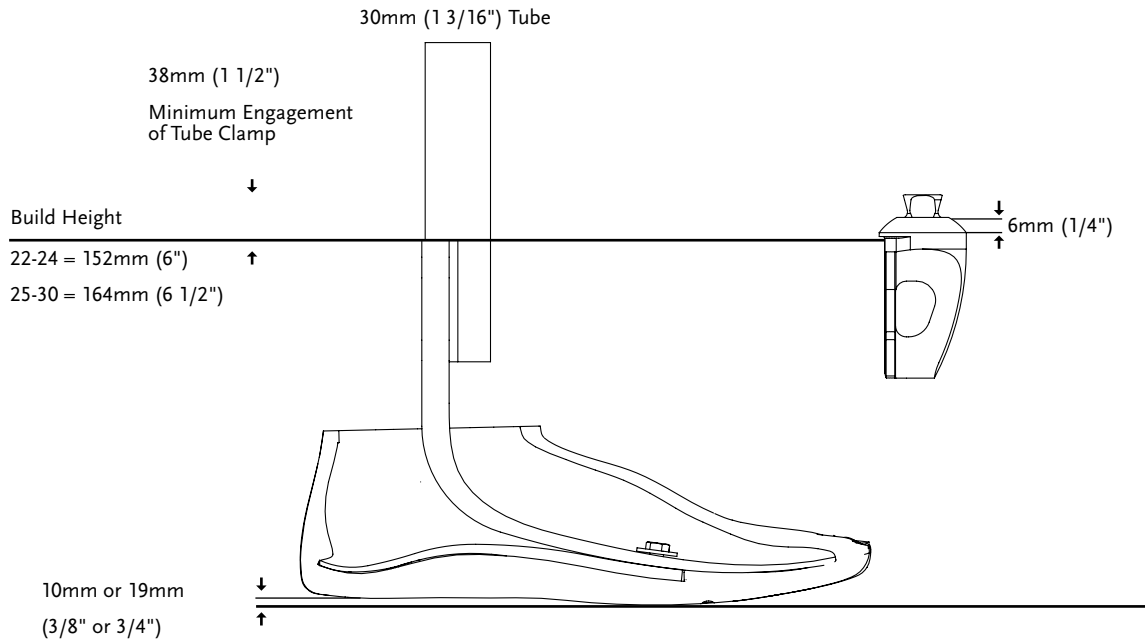
SPLIT TOE	EVO™

CATEGORY SELECTION CHART

WEIGHT KG	45-52	53-59	60-68	69-77	78-88	89-100	101-116	117-130	131-147	148-166
WEIGHT LBS	99-115	116-130	131-150	151-170	171-194	195-221	222-256	257-287	288-324	325-365
Low Impact Level	1	1	2	3	4	5	6	7	8	9
Moderate Impact Level	1	2	3	4	5	6	7	8	9	Special Order
High Impact Level	2	3	4	5	6	7	8	9	Special Order	Special Order

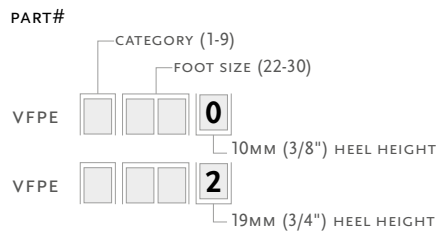
VARI-FLEX® WITH EVO™

CLEARANCE

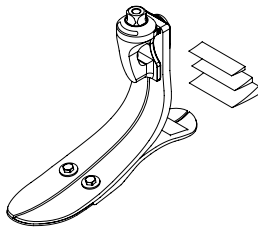


KITS

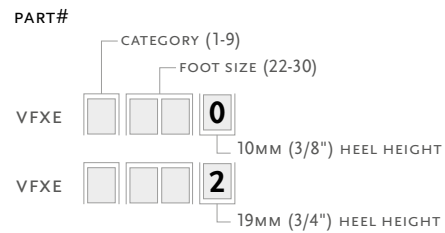
VARI-FLEX WITH EVO MALE PYRAMID OPTION



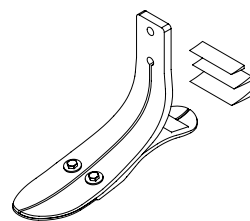
Note: Solid toe, low and high heel are special orders.



VARI-FLEX WITH EVO WITHOUT ADAPTER



Note: Solid toe, low and high heel are special orders.



VARI-FLEX® WITH EVO™

COMPONENTS

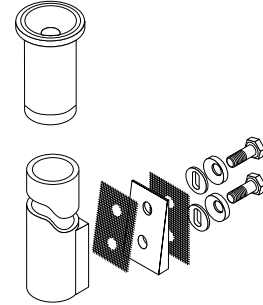
30MM (1 3/16") CARBON FIBER TUBE KIT

Choose according to size and category of the foot module utilized.

PART#	CAT.	SIZE	LENGTH	HOLE SPACING	WEIGHT
VFX00003	1-6	22-30	229mm 9"	38mm 1 1/2"	216g 7.3oz
VFX00004	7-9	22-30	229mm 9"	38mm 1 1/2"	275g 9.7oz
VFX00006	1-6	22-30	381mm 15"	38mm 1 1/2"	293g 10.3oz
VFX00007	7-9	22-30	381mm 15"	38mm 1 1/2"	369g 13oz

INCLUDES:

- Alignment Wedges
- Tube
- Spherical Washers
- Attachment Bolts and Hardware (5/16" UNF)
- Friction Pads
- Tube Insert (Cat. 7-9)



TUBE INSERT FOR CATEGORY 7-9; 30MM (1 3/16")

Tube inserts provide the structural integrity necessary for higher category tubes.

PART#	DIAMETER	WEIGHT
A-718009	30mm 1 3/16"	18g 0.63oz



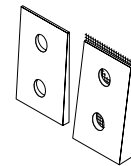
ALIGNMENT WEDGES FOR TUBE KIT (2 DEGREES AND 4 DEGREES)

Placed between the pylon and foot module, alignment wedges allow for plantarflexion and dorsiflexion of the foot without the use of modular components.

PART#	CAT.
CM150041	1-6
CM150042	7-9

Includes:

- Wedges
- Friction Pad
- Loctite



ATTACHMENT BOLTS FOR 30MM (1 3/16") TUBE

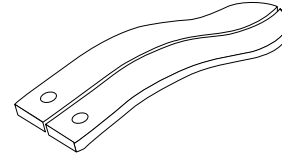
PART#	CAT.	SIZE	LENGTH
CM130219	1-6	5/16" x 24	1 3/4"
CM130213	7-9	3/8" x 24	1 3/4"

VARI-FLEX® WITH EVO™

COMPONENTS

EVO HEEL MODULE

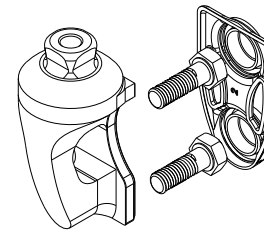
PART#



BOLT-ON MALE PYRAMID ADAPTER

Select according to category of foot module being utilized.

PART#	CAT.	WEIGHT	
FFC2210001	1-6	175g	6.2oz
FFC2210002	7-9	205g	7.2oz



Includes:

- Pyramid
- Hardware (M8 or M10 bolts)
- Plastic Bolt Cap
- Loctite

ATTACHMENT BOLTS FOR PYRAMID

PART#	CAT.	SIZE	LENGTH	
CM130234	1-6	M8	35mm	1 3/8"
CM130223	7-9	M10	35mm	1 3/8"

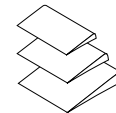
HEEL WEDGE KIT

For adjustment of heel stiffness and roll-over characteristics.

PART#	FOOT SIZE
CM150006	22-27
CM150009	28-30

Includes:

- 3 Wedges
- Adhesive



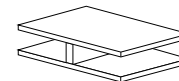
VARI-FLEX® WITH EVO™

COMPONENTS

HEEL DIVIDER

Heel dividers act to separate the edges of a split heel to reduce wear and noise between the composite elements.

PART#	DESCRIPTION
CM140003	Heel Divider



LOCTITE 410 BLACK

PART#	DESCRIPTION
CM160016	Loctite 410 black

TOOLS

KIT TEMPORARY SLOTTED WEDGE, CAT 1-9

Use for initial dynamic alignment of the prosthesis. These wedges are removed and replaced with definitive alignment wedges.

PART#	CAT.
CM100204	ALL

30MM (1 3/16") ALIGNMENT FITTING TOOL KIT

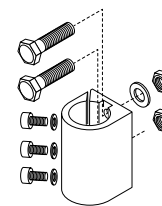
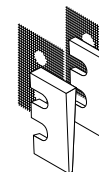
Used in conjunction with pre-cut carbon or Aluminum pylons to establish height of the prosthesis and alignment. Once height and alignment are established, the fixture can be replaced with a standard Flex-Foot® carbon fiber tube.

PART#	CAT.
VFX00008	ALL

Includes:

- Attachment Hardware
- Alignment Tool

Note: Alignment tool is solely meant for alignment purposes not definitive use.

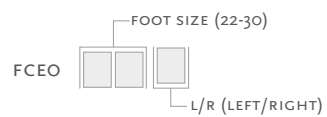


VARI-FLEX® WITH EVO™

COSMETIC FINISHING

FOOT COVER KIT, BEIGE AND BROWN*

PART#



Includes:

- Foot Cover
- Flex-Foot EVO Sock
- Foot Cover Attachment

*Please specify when ordering brown covers, add "BR" to the end of the part number.



FLEX-FOOT EVO SOCKS

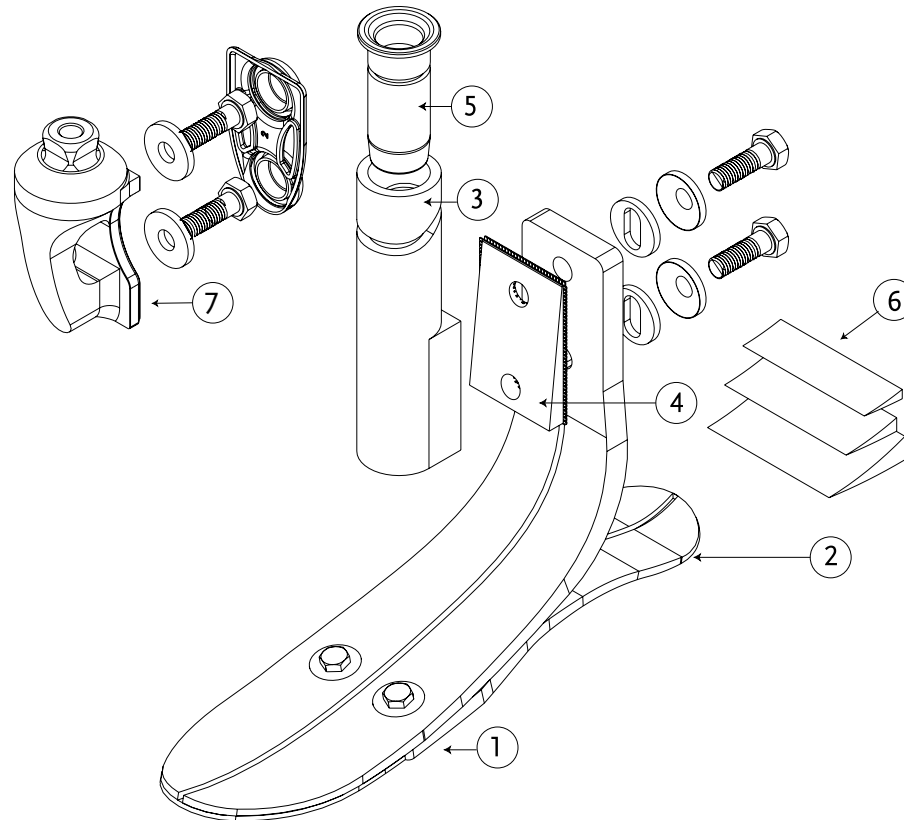
Used to cover the composite foot module to protect the foot and eliminate noise between foot module and foot shell.

PART#	SIZE
FCE63006	22-25
FCE63007	26-30



VARI-FLEX® WITH EVO™

DIAGRAM



DESCRIPTION	
1.	Foot Module
2.	Heel
3.	30mm Carbon Fiber Tube Kit
4.	Alignment Wedges For Tube Kit
5.	Tube Insert
6.	Heel Wedge
7.	Bolt-On Male Pyramid Adapter